

SEMINOLE CHAMBER CHATTER

APRIL 2009

Volume XVII Issue 6

Upcoming Events/APRIL 2009

Together We Will Shine In '09!!

Wed 8 Business Education Workshop
SPC Seminole campus, 7:30 a.m.
TLC Building, Rm. 108



Thurs 9 Seminole Stampede
Kickoff Party/ Chamber Mixer
5 p.m. to 7 p.m. Jim Graden's Cardio
Karate Center, 9104 Seminole Blvd.

Sat 11 Seminole Stampede, 7 a.m.
Family Easter Outing, 9:30 a.m.
Walsingham Park

Sun 12 HAPPY EASTER!

Mon 13 Seminole Chamber Office Closed

Tues 14 City Council, 7:00 p.m., City Hall

Wed 15 Chamber Board Meeting,
7:30 a.m. Chamber Office

Thurs 16 Chamber Luncheon
11:30 a.m. Banquet Masters

Wed. 22 No meeting for Business Education
Workshop

Thurs 23 Tribute to Teachers Breakfast, 7:30 a.m.
Seminole Middle School

Community Event:

Taste of Seminole, Saturday, May 2, 1 p.m. to 9 p.m.
Treasure Island Fun Center, 7770 Seminole Blvd.

Chamber Office Info

Address: 8400 113th St. N.

Mailing Address: P.O. Box 3337

Seminole, FL 33775-3337

Phone: 392-3245 Fax: 397-7753

web site: www.myseminolechamber.com

Jimmy Johnson:

jimmyj@myseminolechamber.com

Gretchen Cain:

gretchenc@myseminolechamber.com

Tammy Bibelhauser:

tammyb@myseminolechamber.com

Notary Services Available

County Economic Development Director To Speak at April 16 Chamber Luncheon



Mike Meidel, Director of Pinellas County Economic Development since 2004, will be the guest speaker at the Seminole Chamber's monthly luncheon Thursday, April 16, beginning at 11:30 a.m. at Banquet Masters, 8100 Park Blvd. N.

Advance payment (\$12 per person) reservation is appreciated.

Mike has been involved in economic development efforts in Florida for nearly 30 years. He joined the Florida Power (now Progress Energy) Economic Development Department in 1987 and became the Area Manager for North Pinellas County in 1996. He served in that capacity for three years, and was selected as President and CEO of the Clearwater Regional Chamber of Commerce in 1999. Mike is a graduate of the Economic Development Institute at the University of Oklahoma and is a Certified Economic Developer (CEcD). He has built his career around the diverse but interconnected aspects of economic development, and regards bringing quality jobs to area residents as extremely rewarding work. With Pinellas County Economic Development, Mike continues to focus on recruiting new businesses to the area, as well as assisting existing firms in expanding their entrepreneurial success.

A Race To the Finish Line ... 5k and 1 mile Run Seminole Stampede & Family Easter Outing

Don't be left in the dust! Gear up now for the 16th Annual Seminole Stampede on Saturday, April, 11, 7 a.m. at Walsingham Park. This is a wonderful recreational event for professional runners and families alike. All participants must be in the park by 7:15 a.m., at which time the gates will close to ensure everyone's safety from traffic. The 5k is at 7:30 a.m. and the 1 mile at 8:15 a.m. Awards will be given to the overall first place male and female runner in the 5k, then to the first, second and third place winners in 12 age categories. All 1 mile finishers will receive an award. New this year is an Easter Egg Hunt, sponsored by Seminole First Baptist Church, at approximately 9:30 a.m., following the Stampede awards.

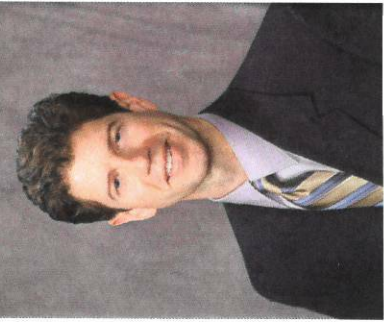
Tribute To Teachers Annual Breakfast is April 23

If you haven't already signed up, please make your reservations now for our annual Tribute to Teachers Breakfast on Thursday, April 23, 7:30 a.m. at Seminole Middle School. (Please see insert in this newsletter). This event is an opportunity to thank our teachers for all they do. One teacher, representing each of the 19 schools in our Seminole area, will be recognized at the breakfast, along with their school administrator. This year's Master of Ceremonies will be Clerk of Courts Ken Burke, local student Meagan Gillespie will be the guest speaker, and there will be musical entertainment. The cost of the hot breakfast buffet is \$10 per person. If you would like to sponsor a nominated teacher, it is an additional \$25.

SEMINOLE CHAMBER CHATTER

Learn & Have Fun! Chamber Business Education Workshop Programs Ahead

Meetings of the Seminole Chamber's Business Education Workshops are on the **second and fourth Wednesday of the month**, 7:30 a.m., St. Petersburg College, Seminole, TLC Building, Room 108. The presenter for the **April 8** meeting will be David



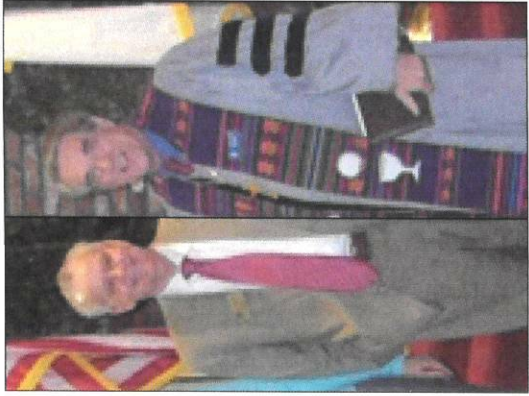
Profit. David's topic is "Strategic Marketing - 5 Ways to Grow Your Business" and looks at marketing in a strategic, high level approach.

There will not be a meeting April 22; instead, the group is encouraged to network at the **Tribute to Teachers Breakfast on Thursday, April 23, at Seminole Middle School.**

The Business Education Workshop is an opportunity to exchange business cards that will produce leads, but foremost a workshop to facilitate learning. Participation is one of many intangible benefits of being a Chamber member. Enjoy the free coffee, camaraderie and fun!

Jimmy's Gem: Pastor Bob Wierenga

For all he does for the Seminole Chamber ... "Pastor Bob Wierenga truly has a good heart," said Jimmy Johnson. Pastor Bob, of Lake Seminole Presbyterian Church, is a great "neighbor" to our Seminole Chamber. He is very concerned about the quality of life in the Seminole community, including the business community.



A frequent attendee of the Seminole Chamber luncheons, he often gives the invocation. The Church participates in our Chamber's various projects, such as Tribute to Teachers, Back to School Supplies Drive, help to needy families during the holidays and the "Bright Before Your Eyes" Illuminated holiday night parade. Additionally, the Church is a referral source for people who come to the Chamber looking for social services. We thank you, Pastor Bob Wierenga for the goodwill you and your Church congregation offer to all.

Patrick Jordan, P.A. Accountant

4871 100th Way N.
St. Petersburg, FL 33708
727-393-9246



- ◆ QuickBooks Training ◆
- ◆ Business Accounting ◆
- ◆ Tax Preparation ◆
- ◆ Payroll ◆
- ◆ On-Site Service ◆

Web Site: www.patjordanpa.com

Printed Courtesy of Tony McCoy, The UPS Store, Seminole, FL



Chamber President's Column By Paul Ziegler

President's Message - A Good First Quarter Report

They may be rare, but did you ever have a day when you get up in the morning with a lot of energy, and things seem to fall into place all day long, and by the end of the day you feel you actually made progress toward your goal? In fact, you are so pleased that you sit back in the evening and reflect on the day and marvel at how much was accomplished. This quarter for the Seminole Chamber was one of those- we are thrilled about the future of the Chamber!

We started in January with the installation of the new board of directors, recognized our new Mr. Seminole, Business of the Year, Boss of the Year, and Merit Award and we drew attention to the fact we were 'under construction' as an organization to revamp the way we do business. Following up on that theme, we spent February and March working tirelessly on our plan, including a number of Saturday morning 'Think Tank' sessions to come up with the action steps, forming the framework for the future growth of the Chamber.

Going forward, we will focus on growing our membership with a direct mail marketing campaign set to start this week, featuring a new Flex Pay option available to all members: \$89 a month for 3 months as an alternative to one payment of \$230.00

We have selected a vendor, Green Leaves Web Design to build a new website that will be rolled out by May 1. This new website will have dramatically expanded functionality that will be beneficial to every member, and it will provide opportunities in the marketing of your business. We feel good about the value this will add everyone's membership.

While all this was going on, our planning for the Seminole Stampe and the effort to partner on Tribute to Teachers progressed nicely to where we are well on the way to getting organized and funded for these April events. To complete the list of highlights, we have added 5 new members and we had an awe-inspiring program presented by Dr. Carl Kuttler, Jr. at our March lunch meeting.

I want to say thanks to Jimmy, Gretchen and Tammy for their hard work, along with the efforts of the board of directors and several members that have made this first quarter a success!



OFFICERS 2009

President, PAUL ZIEGLER
Colonial Bank, St. Petersburg
347-0197 Fax: 347-4744
paul_ziegler@colonialbank.com

President-elect, JACKIE TATSAK
Pinellas Village
399-2500
jtatsak@ccdospp.org

Corp. Secretary, DAN BERARD
Uncle Bob's Self Storage
392-1423
dberard@tampabay.rr.com

Treasurer, DR. JAMES OLLIVER
St. Petersburg College, Seminole
394-6110 Fax: 394-6123
olliverj@spcollege.edu

Past President, "DOC" KINSEY
Seminole Professional Firefighters 2896
391-0095 or 430-3488
ddkinsey@verizon.net

DIRECTOR
DAVID BATES
Keller Williams Realty
744-4604
davidbates@tampabay.rr.com

MARIANNE FISHER
Clarkson & Kidd, DO, PA
393-3404
marianne@oakmed.com

NANCY GILES
PARC
345-9111
Ngiles@PARC-FL.org

ROBERT HOLTZMAN
Ameriprise Financial Services
327-9077
reholtz42@gmail.com

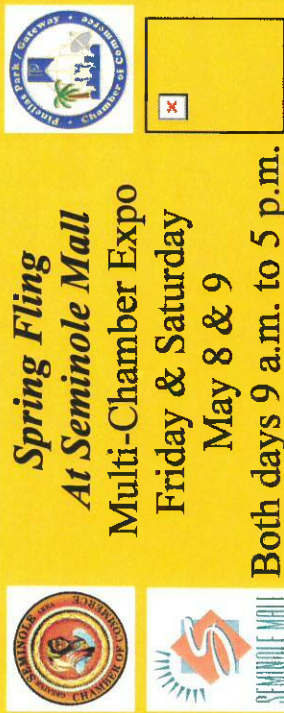
MIKE MCQULKIN
Wright's Health Care
391-9986
mmcquilk@wrightshealthcare.com

JACOB VALINTINE
Unique Dream Promotions
230-9281
uniquedreampromo@yahoo.com

STEVE ZAZZARO
PBS Computer Services
CELL: 432-3544
steve@pbscomputers.com

"Always Do Business First
With A Seminole Chamber
of Commerce Member."

SEMINOLE CHAMBER CHATTER



Spring Fling
At Seminole Mall
Multi-Chamber Expo
Friday & Saturday
May 8 & 9
 Both days 9 a.m. to 5 p.m.
 \$50 for 5-6 ft. tables
 \$60 for 8 ft. tables, \$70 for 10ft. spaces
 Electricity \$25

Reserve Your Space Now
Call the Seminole Chamber office
at 392-3245

Promote Your Business
Themes: Mother's Day, Memorial Day
Summer Parties/Weddings



Always Shop First With A Seminole Chamber of Commerce Member! When Chamber Administrative Assistant Tammy Bibelhauser's automobile recently needed an oil change, she remembered to do business with B Squared Automotive, one of the Chamber's newer members. Pictured is Tammy receiving excellent customer service from Mary Berry and Beckie Berry.

SEMINOLE CHAMBER CHATTER



Getting Connected!
 Participating in the Business Connections luncheon Feb. 26, hosted by Freedom Square Retirement Community are, from left, Mike McQuilkin, Wright's Health Care and Rehabilitation Center; Bob Sims, Mr. Seminole 1993-94; Mike Mason, Freedom Square administrator; Jacob Valintine, Unique Dream Promotions; Jimmy Johnson, Seminole Chamber Executive Director; Bob Holtzman, Ameriprise Financial Services; Jack Sonnenberg, Sonnenberg Insurance Services and Dr. Ed Lurie, Portobello Square. The luncheon was an informal get together for the purpose of talking about issues of relevance to the Seminole business community.

B Beach & Luxury Realty, Inc.
 290 75th Ave
 St. Pete Beach, FL 33706
727-363-6300
www.BeachLuxuryRealty.com

Excellence In Real Estate!
 Whether the property is Beach, Luxury or anything in between... Beach & Luxury Realty is the one to call!

Annette Starkey	Beth Nielsen	Brendan McDonnell	Brooke Gockenbach	Candice Rosenberg	Carlene Butler	Cris Burlaw Licensed Real Estate Broker	Dena Conway	Derek Noggle	Diane Eavey	Dianna McCormick	Donna Morton	Erica Geiger	Gabi Annyll	Heather Boesch	Helen DeSimone	James Hebin	JoAnne Lloyd	John Colello	John Marerro	June Dan	Kandice Schromm	Kerri Halpain	Lynn Ganster	Mark Pateri	Michael Tynan	Norma Rodriguez	Paul Cooperman	Paul Manny	Rachel Reyes	Ralph Richardson	Rosalia Coyne	Rose Brown	Solveig Frings	Sondra McDonald	Terry Chick	Ulrike Bailerscheff	Valerie Olbrich	Virginia Ryan
-----------------	--------------	-------------------	-------------------	-------------------	----------------	--	-------------	--------------	-------------	------------------	--------------	--------------	-------------	----------------	----------------	-------------	--------------	--------------	--------------	----------	-----------------	---------------	--------------	-------------	---------------	-----------------	----------------	------------	--------------	------------------	---------------	------------	----------------	-----------------	-------------	---------------------	-----------------	---------------

Lewis W. Mohn
Funeral Home & Cremation Service
Superior Facilities And Service
 Directors Serving the Greater Seminole Area Since 1958
Family Owned & Operated
393-3481
 9700 Seminole Boulevard

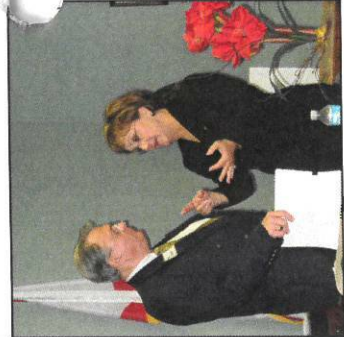
MARTY MADDOX, LMT, RYT
 Licensed Massage Therapist Registered Yoga Teacher
 8824 Seminole Blvd Seminole, FL 33772
www.yoga4all.com
727-692-9642
 Certified Pre-Natal / Post-Natal Relaxation - Swedish Massage Nationally Certified
 Group Yoga Classes Individual Yoga Class Workshops Corporate Yoga
 MA33790

First Home Bank
Directors:
 Billie A. Barger
 George C. Donovan
 Robert G. Castles
 Jeffrey H. Forbes
 Dennis R. DeLoach
 Claude D. McMullen
Officers:
 Jeffrey H. Forbes, CEO
 Larry C. Cunningham, Pres./COO
 Gene Jasmin, SVP/CFO
 Member FDIC. Equal Opportunity Lender.
 9190 Seminole Blvd. Call: 394-2265

Jack W. Sonnenberg L.U.T.C.F.
 Managing General Agent
Sonnenberg Insurance Services, Inc.
 2410 West Bay Drive
 Belleair Bluffs / Largo, Florida 33770
 Tel: 727-582-9151
 Fax: 727-582-9051
 A Contracted General Agent of Florida
 Health Options, Independent Licensee of the Blue Cross and Blue Shield of Florida

SEMINOLE CHAMBER CHATTER MIXER AT STATE REP. JANET LONG'S OFFICE

Attendees included Gary Searsbrook, Central Business Telephone Systems; Kathryn Larkin, Long's assistant; Tammi Hagedorn, Seminole Title Co./DeLoach & Hostra, PA; Beth and Marc Neilsen, Dinner At Eight Social Club.



State Rep. Janet Long had a Chamber mixer open house at her offices located in the Colonial Bank Building at Eagle Park Plaza. Here, Chamber member/financial advisor Gene Stern chats with Rep. Long.

Welcome New Seminole Chamber Member!

Ginny Meranda, Grow Financial Federal Credit Union, 10801 Starkey Rd., Suite 103, Largo (Bardmoor Publix shopping center) displays her membership plaque.



Registration Form In Newsletter:

Seminole Stampede 5k and Imile runs & Family Easter Outing
Saturday, April 11, 7:30 a.m.



No-Clasp Partial Dentures

Are you living with ill-fitting partials?
Would you like to eliminate those obvious metal hooks?

If you answered yes to either question, you will be happy to learn about no-clasp partials. Dr. Massaro has been replacing conventional partials for patients for many years. The no-clasp partials are not only superior in appearance, they are healthier for your bone and gums. So why not see if there is a better option for you? Call today for more information on no-clasp partials or to schedule your free visit.

Call today for a free consultation
or to receive information.

727-397-6611

Trudi P. Massaro, D.M.D.
Cosmetic & General Dentistry
Seminole, FL

Since 1974



The patient and any other person responsible for payment has the right to refuse to pay cancel payment on be reimbursed for any payment on any other service, examination or treatment which is performed as a result of and within 72 hours of responding to the free, discounted or reduced fee, service, examination or treatment.



Chamber President Paul Ziegler and Jimmy Johnson, Executive Director, present plaques to new members Geoff Beardsley, videographer, left, and Bob Ieva, Cruise Planners.

SEMINOLE CHAMBER CHATTER

Can't miss the spot! The Express Car Wash at 9475 Ulmerton Rd. is providing



some good, clean, free advertising to the Seminole Chamber of Commerce. We appreciate the help of owner Chris Tabor and employees Ryan Allen (left) and Jacob Fagerquist (right) in spreading the good word!



- Weddings
- Corporate Events
- Beach Portraits
- Social Gatherings

Holiday Inn Highlands
Location: Shalimar
• Hi-Res Digital Photography
• Online Prints & Photo Ordering
Sherry Sandstrom
Phone: 727-504-8950
Email: sa_sandstrom@yahoo.com
Webster: www.SnapshotsBySherry.com

"Always Shop First
With A
Seminole Chamber
Member!"



Ridge Seminole Management Corp.
Professional Office Space
Commercial Leasing & Management

Gerald D. Shotts, Jr.
BROKER

8275 113th Street North
Seminole, Florida 33772
gshotts@aol.com
(727) 397-2534
(727) 391-0056 Fax



Seminole Gardens
Resales, Rentals
& Office Space

Linda D. Wilson, CRS
BROKER ASSOCIATE

(727) 397-2534
(727) 391-0056 Fax
lwilson@myseminolegardens.com



Weddings, Bridal Events, Runway & Fashion Shows, Parties, Headshots, Business Photos, Events, Passport ID's

Kathryn T. Larkin
Professional Makeup Artist
Makeup by KATHRYN

727-709-0378
ktlarkin@aol.com

Vardy & Company

CPA'S, P.A.

Harold C. Vardy, CPA

8600 113th Street N., Seminole, FL 33772
Office: 393-8755 Fax: 393-0467

TAX PLANNING & PREPARATION

Individual * Estate & Trust * Business

FINANCIAL STATEMENTS

Audited * Reviewed * Compiled

BUSINESS ACCOUNTING

& BOOKKEEPING

BUSINESS VALUATIONS

MANAGEMENT CONSULTING

OTHER FINANCIAL SERVICES

INFORMATION TECHNOLOGY SERVICES

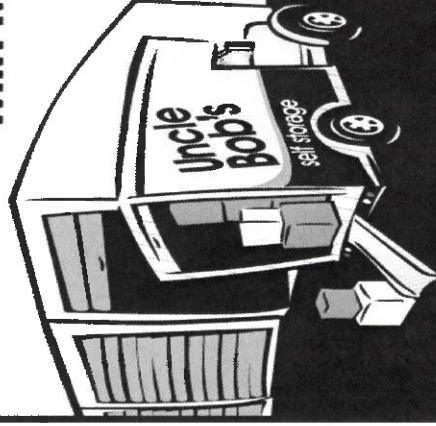
QUICKBOOKS PROFESSIONAL

Visit our Web Site: WWW.VARDY-CPA.COM

Free Truck Rental

with Move-in*

Uncle Bob's
self storage



Contact Dan Berard
10833 Seminole Blvd.

(727) 392-1423

*New customers only. First 25 miles free, mileage rate applies thereafter. Deposit required. Local moves only.

***Practical
Small Business
Entrepreneurship
Academy
May 5 to Aug. 25***



In Partnership with the Seminole Chamber of Commerce/ Business Assistance Program (BAP), St. Petersburg College Corporate Training Program/ Seminole Campus, & Ketch-com Development Inc.

- Have you Ever Dreamed of Starting Your Own Business?
 - Are You Ready to Be Your Own Boss?
 - Have You Started A New Business, But Need Help Getting It Off the Ground?
 - Learn To Develop Your Own Business Plan

This 15-week Comprehensive Course That Focuses On The Nuts and Bolts of Running a Small Business Is For You!

Practical Entrepreneurship for Small Businesses Offered **May 5 - Aug. 25**

Tuesday evenings from 6 p.m. to 9 p.m. at St. Petersburg College, Seminole Campus, 9200 113th St. N., Seminole. To register or for more information, contact SPC Corporate Training at (727)341-4445 or www.spcollege.edu/ct

Investment Is Only **\$402 Per Participant** ...

- Fee Includes 3 textbooks, binder for all course materials
- 1-Year Membership in the Seminole Chamber of Commerce
- Mentor Assigned to Each Participant
- Networking Opportunities, Support From Other Business People



**Greater Seminole Area
Chamber of Commerce
8400 113th St. N.
Seminole, FL 33772**

PRSR STD
U.S. Postage
PAID
ST. PETERSBURG,
FL 337309998
Permit No. 8014

Mr. Paul King
6812 Tequesta Drive
Seminole, FL 33777